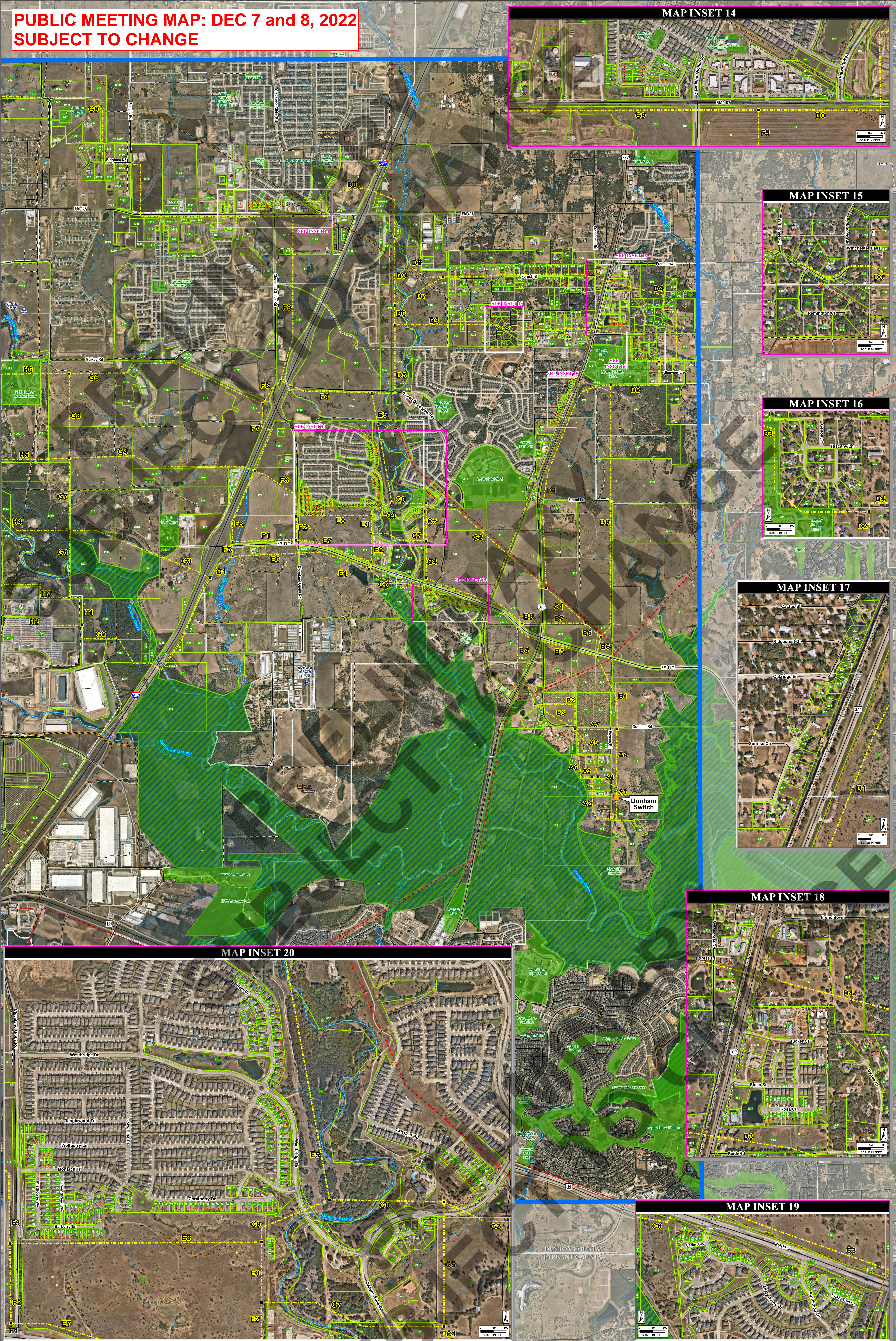


PUBLIC MEETING MAP: DEC 7 and 8, 2022 SUBJECT TO CHANGE



MAP FEATURES	
	STUDY AREA BOUNDARY
	EXISTING TRANSMISSION LINE
	CITY BOUNDARY
	TRACT NUMBER AND BOUNDARY
	PARK / RECREATIONAL AREA
	USACE RECREATIONAL AREA
	RAILROAD
	PUBLIC ROAD
	PIPELINE GREATER THAN 8"
	PIPELINE LESS THAN 8"
	RIVER / STREAM
	PROJECT ENDPOINT
	AIRPORT / AIRSTRIP
	HELIPORT
	HISTORICAL MARKER
	TRAVELING IRRIGATION*
	NATIONAL REGISTER OF HISTORIC PLACES SITE
	CEMETERY
	COMMUNICATION TOWER
	SCHOOL
	HABITABLE STRUCTURE (WITHIN 520 FEET OF ROUTE)
	RAILROAD COMMISSION WELL DATA
	TEXAS WATER DEVELOPMENT BOARD GROUNDWATER WELL DATA

Notes:

- Some legend symbols are enlarged for easier identification.
- Aerial photography is from the most recent available database (GeoEye, 2022).
- Quantitative cultural resources data are not shown on this map as these data are not to be reproduced, distributed, or released to the public.
- Data were last updated for the purpose of this map on August 30, 2022.
- The information contained on this map is derived from the most current data available and is not intended to be used for any purpose other than that for which it was prepared.
- Legend items indicated by (*) represent features that were researched, verified, and located but are otherwise beyond the map extent, and cannot be located on the map.

Date Plotted: 12/6/2022
Date Revised: 12/6/2022

