

Market Test Changes – Move Out Request/Response

DOCUMENT HISTORY

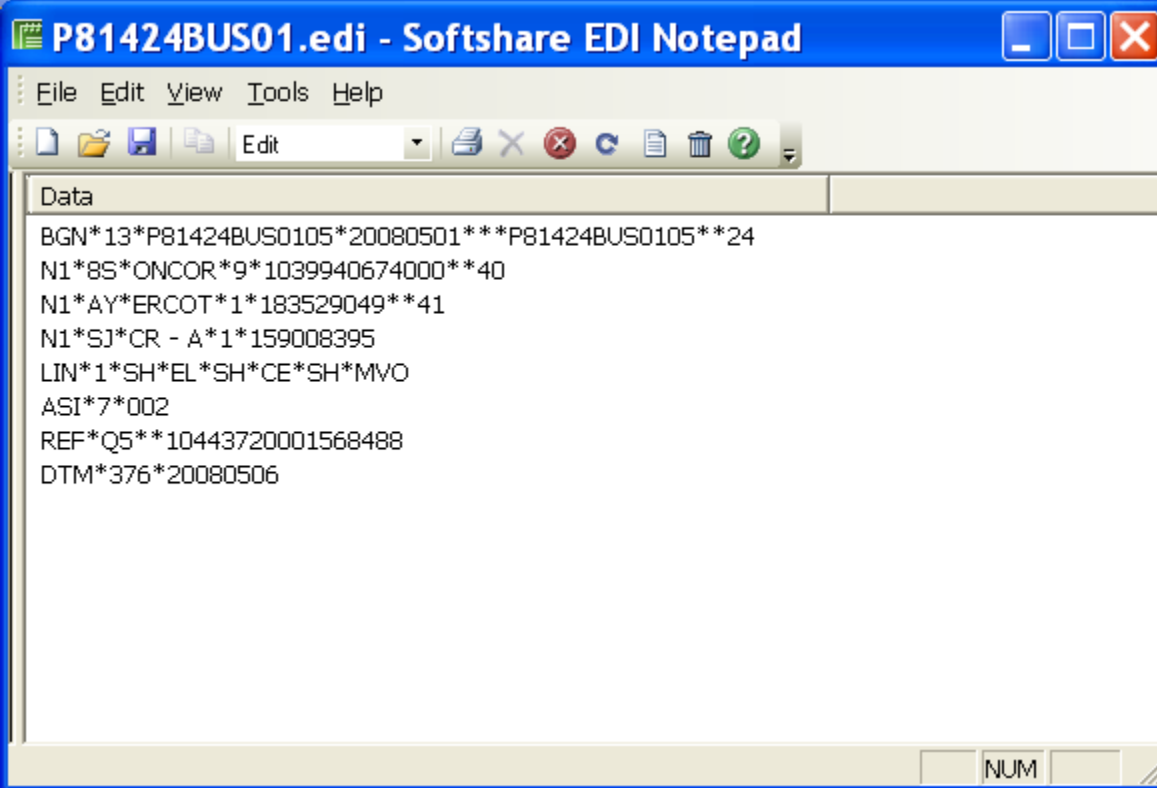
Date	Version	Description	Author
02/28/2008	V 1.0	Initial Release	Jim Rupert
04/09/2008	V 1.1	Added Appendix B. Batching, Appendix C. Control Numbers	Lori Eubanks

814_24: Move Out Request

Sequence Changes: None

ANSI Validations: ANSI 4010 Standards followed

EDI Sample (Test Case):



The image shows a screenshot of a Notepad window titled "P81424BUS01.edi - Softshare EDI Notepad". The window has a blue title bar and standard Windows window controls (minimize, maximize, close). The menu bar includes "File", "Edit", "View", "Tools", and "Help". The toolbar contains icons for file operations (New, Open, Save, Print, Copy, Paste, Undo, Redo, Delete, Help) and a dropdown menu currently set to "Edit". The main text area contains the following EDI data:

```
Data
BGN*13*P81424BUS0105*20080501***P81424BUS0105**24
N1*8S*ONCOR*9*1039940674000**40
N1*AY*ERCOT*1*183529049**41
N1*SJ*CR - A*1*159008395
LIN*1*SH*EL*SH*CE*SH*MVO
ASI*7*002
REF*Q5**10443720001568488
DTM*376*20080506
```

At the bottom right of the window, there is a small box labeled "NUM".

TxSet Validation Changes: Segments which include changes are highlighted in yellow and the changes are **notated in red font**. ANSI validations are notated in gray font or not shown if they are not needed for completeness.

EDI Field	Allowed Value(s) - existing	Allowed Value(s) - new	Pre-Condition (existing)	Pre-Condition (new)	Rejection Code (existing)	Rejection Code (new)
BGN01	"13"	No Change			'A13' – Invalid data format	No Change
BGN02	Not Null	Not Null <i>alphanumeric only – uppercase A thru Z, 0 thru 9</i>			'A13' – Invalid data format	No Change
BGN06	Not Null	Not Null <i>alphanumeric only – uppercase A thru Z, 0 thru 9</i>			'A13' – Invalid data format	No Change
BGN08	'24'	No Change				N/A
N1(8R)01	'8R'	No Change		<i>Not Used Note: Do not enforce this validation... see ONCOR decision in the comments, an '8R' segment is allowed; no reject response sent</i>		<i>N/A</i>
N1(8R)02	Not Null	No Change	<i>If N1(8R)01 equals '8R'</i>	No Change	<i>ANSI 997 NACK</i>	No Change

EDI Field	Allowed Value(s) - existing	Allowed Value(s) - new	Pre-Condition (existing)	Pre-Condition (new)	Rejection Code (existing)	Rejection Code (new)
N4(8R)03		<i>Numeric only (5 or 9 digits)</i>	<i>If N1(8R)01 equals '8R'</i>	<i>If N1(8R)01 equals '8R' Note: Do not enforce this validation... see ONCOR decision in the comments</i>		<i>N/A</i>
N1(BT)01		<i>'BT'</i>		<i>Not Used Note: Do not enforce this validation... see ONCOR decision in the comments, a 'BT' segment is allowed; no reject response sent</i>		<i>N/A</i>
N1(BT)02	<i>Not Null</i>	<i>No Change</i>	<i>if N1(BT)01 equals "BT"</i>	<i>No Change</i>	<i>ANSI 997 NACK</i>	<i>No Change</i>
N4(BT)01	<i>NotNull</i>	<i>No Change</i>	<i>if N1(BT)01 equals "BT"</i>	<i>if N1(BT)01 equals "BT" Note: Do not enforce this validation... see ONCOR decision in the comments</i>		<i>N/A</i>
N4(BT)03		<i>alphanumeric only – uppercase A thru Z, 0 thru 9</i>	<i>if N1(BT)01 equals "BT"</i>	<i>if N1(BT)01 equals "BT" Note: Do not enforce this</i>		<i>N/A</i>

EDI Field	Allowed Value(s) - existing	Allowed Value(s) - new	Pre-Condition (existing)	Pre-Condition (new)	Rejection Code (existing)	Rejection Code (new)
				<i>validation... see ONCOR decision in the comments</i>		
PER(IC)01	"IC"	No Change		<i>Not Used Note: Do not enforce this validation... see ONCOR decision in the comments, an 'IC' segment is allowed; no reject response sent</i>		N/A
PER(IC)02	NotNull	No Change	<i>If PER(IC)01 segment exists</i>	<i>If PER(IC)01 segment exists Note: Do not enforce this validation... see ONCOR decision in the comments</i>		N/A
PER(IC)03	"TE" or "EM"	No Change	<i>If PER(IC)04 is present</i>	No Change	ANSI 997 NACK	No Change
PER(IC)04	notNull	No Change	<i>If PER(IC)03 is present</i>	No Change	ANSI 997 NACK	No Change
PER(IC)05	"TE" or "EM"	No Change	<i>If PER(IC)06 is present</i>	No Change	ANSI 997 NACK	No Change
PER(IC)06	notNull	No Change	<i>If PER(IC)05 is present</i>	No Change	ANSI 997 NACK	No Change

EDI Field	Allowed Value(s) - existing	Allowed Value(s) - new	Pre-Condition (existing)	Pre-Condition (new)	Rejection Code (existing)	Rejection Code (new)
N1(8S)01	"8S"	No Change				'A13'
N1(8S)02	notNull	No Change				'A13'
N1(8S)03	("1" or "9")	No Change				'A13'
N1(8S)04	Not Null	No Change	If N103 = 9 then stringlength must be 13 else if N103 = 1 then stringlength = 9	No Change		'A13'
N1(8S)06	"40"	No Change				'A13'
N1(AY)01	"AY"	No Change				'A13'
N1(AY)02	notNull	No Change				'A13'
N1(AY)03	("1" or "9")	No Change				'A13'
N1(AY)04	NotNull	No Change	If N103 = 9 then stringlength must be 13 else if N103 = 1 then stringlength = 9	No Change		'A13'
N1(AY)06	"41"	No Change				'A13'
N1(SJ)01	"SJ"	No Change				'A13'
N1(SJ)02	notNull	No Change				'A13'
N1(SJ)03	("1" or "9")	No Change				'A13'
N1(SJ)04	Not Null	No Change	If N103 = 9 then stringlength must be 13 else if N103 = 1 then	No Change		'A13'

EDI Field	Allowed Value(s) - existing	Allowed Value(s) - new	Pre-Condition (existing)	Pre-Condition (new)	Rejection Code (existing)	Rejection Code (new)
			<i>stringlength = 9</i>			
N1(SJ)06	<i>Not Used</i>	<i>No Change</i>				'A13'
LIN01	<i>NotNull</i>	<i>No Change</i>			'API'	No Change
LIN02	"SH"	<i>No Change</i>			ANSI 997 NACK	<i>No Change</i>
LIN03	"EL"	<i>No Change</i>			API	<i>No Change</i>
LIN04	"SH"	<i>No Change</i>			'API'	<i>No Change</i>
LIN05	"CE"	<i>No Change</i>			'API'	<i>No Change</i>
LIN06	"SH"	<i>No Change</i>			'API'	<i>No Change</i>
LIN07	"MVO"	<i>No Change</i>			'API'	<i>No Change</i>
ASI01	'7'	<i>No Change</i>				'ACI'
ASI02	'002'	<i>No Change</i>				'MTI'
REF(Q5)01 in LIN~ loop	"Q5"	<i>No Change</i>				'A13'
REF(Q5)03 in LIN~ loop	<i>Not Null</i>	<i>No Change</i>			'A76'	<i>No Change</i>
REF(1P)01 in LIN~ loop	'1P'	<i>No Change</i>	<i>Optional</i>	<i>No Change</i>		'A13'
REF(1P)02 in LIN~ loop	'2MR' or 'B44'	<i>No Change</i>	<i>if REF(1P)01 equals "1P"</i>	<i>No Change</i>		'A13'
DTM(376)01 in LIN~ loop	"376"	<i>No Change</i>				'A13'
DTM(376)02 in	<i>NotNull</i>	<i>No Change</i>	<i>if DTM(376)01</i>	<i>No Change</i>	ANSI 997	No Change

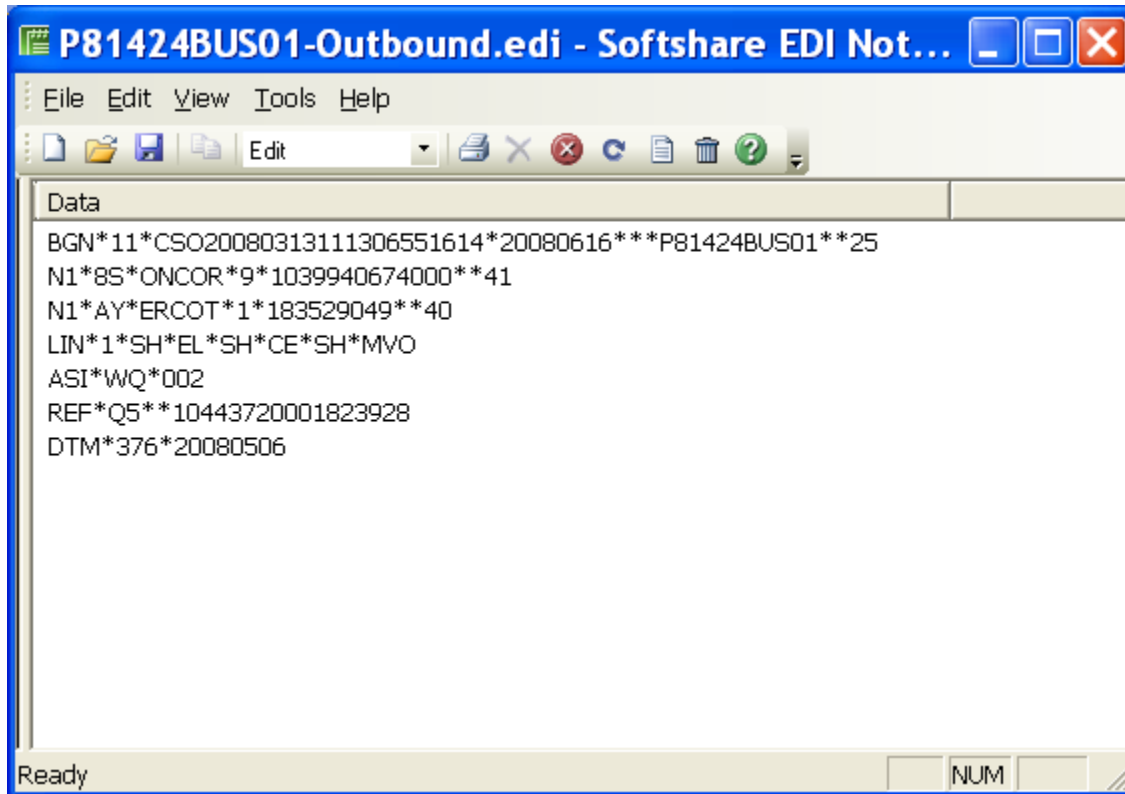
EDI Field	Allowed Value(s) - existing	Allowed Value(s) - new	Pre-Condition (existing)	Pre-Condition (new)	Rejection Code (existing)	Rejection Code (new)
LIN~ loop			<i>equals "376"</i>		NACK	

814_25: Move Out Response

Sequence Changes: None

ANSI Validations: ANSI 4010 Standards followed

EDI Sample (Test Case):



TxSet Validation Changes: Segments which include changes are highlighted in yellow and the changes are **notated in red font**. ANSI validations are **notated in gray font** or not shown if they are not needed for completeness.

EDI Field	Allowed Value(s) - existing	Allowed Value(s) - new	Pre-Condition (existing)	Pre-Condition (new)	Error String (existing)	Error String (new)
BGN01	"11"	No Change				
BGN02	Not Null	Not Null alphanumeric only – uppercase A thru Z, 0 thru 9			Error string should include unallowed values – i.e. special characters and lower case	New Format*
BGN06	Not Null	Not Null alphanumeric only – uppercase A thru Z, 0 thru 9	From Original Inbound 814_24	No Change	Error string should include unallowed values – i.e. special characters and lower case	New Format*
BGN08	"25"	No Change				New Format*
N1(8S)01	"8S"	No Change				New Format*
N1(8S)02	notNull	No Change				New Format*
N1(8S)03	"1" or "9"	"9"				New Format*
N1(8S)04	Not Null	No Change	If N103 = 9 then	No Change		New Format*

EDI Field	Allowed Value(s) - existing	Allowed Value(s) - new	Pre-Condition (existing)	Pre-Condition (new)	Error String (existing)	Error String (new)
			<i>stringlength must be 13 else if N103 = 1 then stringlength = 9</i>			
N1(8S)06	"41"	<i>No Change</i>				<i>New Format*</i>
N1(AY)01	"AY"	<i>No Change</i>				<i>New Format*</i>
N1(AY)02	"ERCOT"	<i>No Change</i>				<i>New Format*</i>
N1(AY)03	"1"	<i>No Change</i>				<i>New Format*</i>
N1(AY)04	"183529049"	<i>No Change</i>				<i>New Format*</i>
N1(AY)06	"40"	<i>No Change</i>				<i>New Format*</i>
LIN01	<i>Not Null</i>	<i>No Change</i>	<i>From Original Inbound 814_24</i>	<i>No Change</i>		<i>New Format*</i>
LIN02	"SH"	<i>No Change</i>	<i>From Original Inbound 814_24</i>	<i>No Change</i>		<i>New Format*</i>
LIN03	"EL"	<i>No Change</i>	<i>From Original Inbound 814_24</i>	<i>No Change</i>		<i>New Format*</i>
LIN04	"SH"	<i>No Change</i>	<i>From Original Inbound 814_24</i>	<i>No Change</i>		<i>New Format*</i>
LIN05	"CE"	<i>No Change</i>	<i>From Original Inbound 814_24</i>	<i>No Change</i>		<i>New Format*</i>
LIN06	"SH"	<i>No Change</i>	<i>From Original Inbound 814_24</i>	<i>No Change</i>		<i>New Format*</i>
LIN07	"MVO"	<i>No Change</i>	<i>From Original Inbound 814_24</i>	<i>No Change</i>		<i>New Format*</i>

EDI Field	Allowed Value(s) - existing	Allowed Value(s) - new	Pre-Condition (existing)	Pre-Condition (new)	Error String (existing)	Error String (new)
ASI01	"U" or "WQ"	No Change				New Format*
ASI02	'002'	No Change				New Format*
REF(7G)01	"7G"	No Change	Optional, segment only for reject ASI01 = "U"	No Change		New Format*
REF(7G)02	"008", ABN, ACI, MTI, ANK, FRG, A13, NFI, A76, A84, API, RNE, BIM, D76, DUP, IBO, IMI, SBD, SCP, 017, A83, or DOT	No Change	If REF(7G)01 equals "7G"	No Change		New Format*
REF(Q5)01	"Q5"	No Change				New Format*
REF(Q5)03	Not Null	No Change	Original value from the 814_24	No Change		New Format*
DTM(376)01	"376"	No Change		If ASI01 = WQ		New Format*
DTM(376)02	Not Null	No Change	Original value from the 814_24	No Change		New Format*

APPENDIX A.

New Error Format:

Descriptions

Error messages will be in one of the following four formats.

Invalid Data:

“Error at” <TXSET Loop> + <TXSET Ref Des.> + <[TXSET Data Element]> + <TXSET Segment Qualifier> + “Invalid Data =” <data>

Example:

Error at LIN NM02[89] SJ Invalid data = #\$~~.

Data Length:

“Error at” <TXSET Loop> + <TXSET Ref Des.> + <[TXSET Data Element]> + <TXSET Segment Qualifier> + “Invalid Data Length =” <number>

Example:

Error at LIN NM02[89] SJ “Invalid data length =” 18

Data Type:

“Error at” <TXSET Loop> + <TXSET Ref Des.> + <[TXSET Data Element]> + <TXSET Segment Qualifier> + “Invalid Data Type =” <datatype>

Example:

Error at LIN NM02[89] SJ “Invalid data type =” Alpha-Numeric

IF Reject Code = API

Missing Data:

“Error at” <TXSET Loop> + <TXSET Ref Des.> + <[TXSET Data Element]> + <TXSET Segment Qualifier> + “Data Missing from field”

Example:

Error at LIN NM02[89] SJ “Data missing from field”

APPENDIX B.

Batching:

All transactions of the same type (Registrations, RevenueManagement, or ServiceOrders), with the exception of 867 IDRs, that are being sent to the same Trading Partner (TP) will be batched together into a single Interchange and Group when the outbound EDI is created.

For example, all 650-02s and 650-04s being sent to ACN Energy will be batched together in one Interchange and all 810-02s going to ACN Energy will be batched in a separate Interchange. Similarly, all 814-04/09/13/25/27/28 being sent to ERCOT will be combined in a single EDI Interchange and 867-02/03/04 NonIDR will be batched in a separate EDI Interchange.

All 867 IDR transactions will be scheduled and sent out with the same interval as all other ERCOT-bound transactions, however each 867 IDR transaction will receive its own Interchange and will not be batched together.

As requested, a separate polling process has been setup that will allow the processing of 814-20 Updates to be manually started and stopped. When this polling process is turned on, the 814-20 Updates will be processed and batched together. When the polling process is stopped, 814-20 Updates will still be received from LCIS but they will not be published to BC or sent out to the market. Note: Because 814-20 Updates are sent through this separate process, they will not be batched together with the 814-20 Additions, 814-20 Deletions, or other Registration transactions.

APPENDIX C.

Control Numbers (ISA Control Number):

The decision was made to find the Trading Partner with the highest control number and add 10,000. Apply that number as the new control number for all Trading Partners.