

Why Upgrade to LEDs?

About Oncor

Oncor is a regulated electric distribution and transmission business that uses superior asset management skills to provide reliable electricity delivery to consumers. Oncor operates the largest distribution and transmission system in Texas, providing power to 3 million electric delivery points over more than 102,000 miles of distribution and 14,000 miles of transmission lines. While Oncor is owned by a limited number of investors (including majority owner Energy Future Holdings Corp.), Oncor is managed by its Board of Directors, which is comprised of a majority of independent directors.

Light-emitting diodes (LEDs) offer significant cost savings and other advantages over conventional lamps commonly used in large outdoor and covered areas, such as parking lots and garages:

- **Energy Savings:** LEDs produce more light per watt than conventional high-intensity discharge lamps (e.g., metal halide or high-pressure sodium), so they require less energy to produce the same amount of light.
- **Operational Savings:** LEDs have very long life spans (50,000+ hours), which reduce the frequency of costly maintenance and replacement service.
- **Future Savings:** LEDs are a rapidly evolving technology with a record of efficiency, performance, and longevity advancements—along with reduced manufacturing costs—every year. Amid increasing public emphasis on energy efficiency, LED lighting can minimize a major component of a facility's taxable carbon footprint.
- **Environmental:** LEDs contain no mercury or lead.
- **Light Quality:** LEDs produce a very clean, bright light. The superior color, uniformity, and visibility provided by LED lighting improve user safety and visual comfort while enhancing property values.
- **Durability:** Unlike conventional lighting, LEDs are very tolerant of temperature variations, vibrations, and on/off cycles. LED fixtures can also be tightly sealed, which prevents the interior accumulation of dirt, insects, and moisture and eliminates time-consuming disassembly and cleaning.



Installation of LED parking lot lights (left) compared with HPS lights (right) shows the difference in color appearance and distribution.

Used by permission of BetaLED

Take A Load Off, TexasSM is provided by Oncor Electric Delivery Company LLC as part of the company's commitment to reduce energy consumption and demand. Ecos Consulting implements the Take A Load Off, Texas LED Lighting Program as an independent contractor.

How Can I Participate in the Program?

The LED Lighting Program offers significant incentives for commercial, nonprofit, and governmental customers to upgrade parking lots, garages, and other facilities with energy efficient LED lighting and controls.

These incentives allow Oncor customers to recuperate installation costs in as little as one year, with all future savings and benefits accruing to property owners.

What Measures Qualify?

- ENERGY STAR[®] qualified or eligible LED light fixtures
- Proximity/daylight-sensing LED lighting controls (high/low/off)

All measures must be pre-approved by Oncor and installed by a qualified lighting contractor.

LEDs vs. High-Pressure Sodium (HPS) Lamps					
Fixture Type	Wattage	Lifespan		Energy Use	Annual Cost (maintenance + electricity) @ \$0.11/kWh
		Hrs	Yrs	(24 hrs/day) Annual	
HPS	191 W	24,000	2.7	1,674 kWh	\$195
LED	78 W	50,000	5.7	683 kWh	\$75

SOURCE: "Demonstration Assessment of Light-Emitting Diode (LED) Area Lights for a Commercial Garage" (U.S. Dept. of Energy, Nov. 2008)

How Does the Program Work?

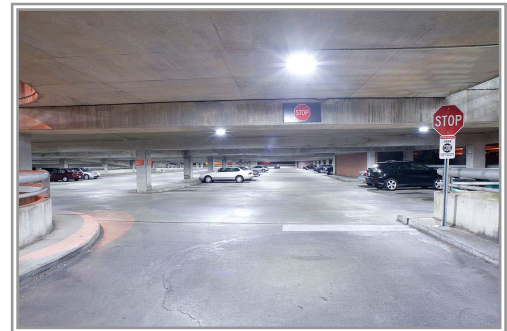
To help its customers save energy and money, Oncor offers incentives to offset the cost of installing high-quality LED lighting and control measures in new and existing facilities. Cash incentives – based on peak-demand and annual energy savings resulting from LED installations or retrofits – are available upon the verified completion of a qualified lighting project. These incentives cover up to 80% of the project's total value, allowing customers to quickly recuperate installation costs while saving energy, reducing operating expenses, enhancing property values, and providing users with outstanding service for years to come.

Who is Eligible?

Commercial, governmental, not-for-profit, and other facilities receiving service from Oncor (for transmission accounts, the facility must receive a point-of-delivery transmission level of 68 kV or less) are eligible to participate in this incentive program. Examples of qualifying LED lighting applications include parking lots, garages, and interior lighting in government buildings.

How Can I Learn More?

Contact Joe Spangler by e-mail at jspangler@ecosconsulting.com or by phone at (214) 930-9741.



Lighting before (top) and after (bottom) an LED retrofit of a parking garage. Note the improved brightness, uniformity, and color rendering provided by the LED fixtures.

Photos courtesy of Cree