

# FIRST RESPONDER SAFETY



For emergencies involving  
Oncor facilities and equipment:

**FOLLOW REPORTING  
PROCEDURE TO**

**CALL ONCOR**



Oncor takes great pride in delivering electricity to more than 3 million homes and businesses in approximately 400 cities across more than 90 Texas counties. As the state's largest transmission and distribution utility, Oncor owns and operates the largest electrical grid in Texas.

This booklet is intended to educate police, fire and other emergency personnel of potential hazards and important safety reminders when responding to incidents involving Oncor facilities and electric equipment. This booklet is not intended for training purposes.

# TRANSMISSION SUBSTATIONS & STRUCTURES

Substations contain high-voltage electric equipment in a secure, fenced-in area. All

Oncor substations have signage on the gate with the substation name and physical address. These gates are locked and should never be tampered with, even in the event of a fire. **No one, including emergency personnel, should enter an Oncor substation** until an Oncor representative has deemed it safe and accompanies entry.

H-Frames and Steel Lattice Towers are common structures that support high-voltage electric lines. Never touch a downed power line – it could be energized. Wait for Oncor to confirm it is safe.

## EMERGENCY RESPONSE:

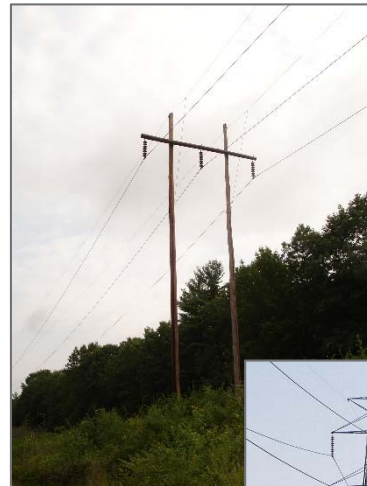
- Do not attempt entry into a substation without Oncor accompaniment
- If Oncor has not arrived at the scene, use reporting procedure to **CALL ONCOR**
- Avoid contact with substation fences, downed lines and electric equipment – they could be energized
- Do not touch or attempt to render aid to anyone in contact with a substation fence, power line or electric equipment – the victim could be energized
- Secure the surrounding area and keep the public at a safe distance
- Do not apply water to electric equipment – **LET IT BURN!**
- Water can be applied, downwind and away from electrical equipment, to surrounding structures, if necessary
- If oil or other fluids are present, stay away from the contaminated area
- Do not use metal tools or ladders until Oncor advises it is safe



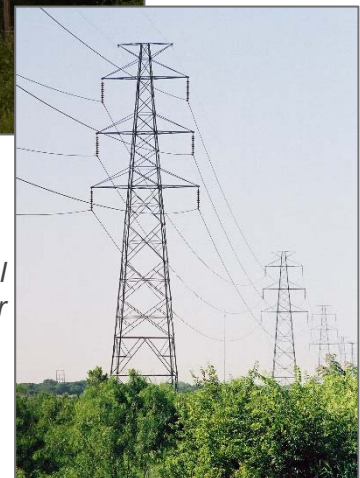
*Pictured: Substation equipment*



*Pictured: Oncor signage on substation gate*



*Left: Wooden H-Frame*



*Right: Steel Lattice Tower*

# ELECTRIC METERS, MANHOLES & VAULTS



*Pictured: Pole-mounted Meter*

## MANHOLES & VAULTS

Oncor has many underground manholes, sidewalk vaults and walk-in vaults across its system with electric equipment and cables.

- Never enter a manhole or vault without an Oncor qualified electrical worker present
- If there is a fire or other emergency, secure the perimeter and keep the public at a safe distance
- Do not attempt to extinguish a fire or render aid to anyone inside a manhole or vault – equipment could be energized and if the atmosphere is unstable, it could present the potential for serious injury or death
- Wait for Oncor to deem entry safe



*Pictured: Sidewalk Vault*

## ELECTRIC METERS

Electric meters are commonly found on the side of houses, mounted to poles or on pad-mounted transformers.

- When responding to an incident, do not touch the equipment or anyone in contact with the meter – it could be energized
- Do not remove the meter – this may not de-energize the equipment
- If there is a fire, do not apply water – you can use an ABC fire extinguisher, if one is available
- Secure the surrounding area and keep the public at a safe distance



*Pictured: Walk-in Vault*



*Pictured: Underground Manhole*

If Oncor has not arrived, use reporting procedure to

**CALL ONCOR**

# DISTRIBUTION POLES & EQUIPMENT

Most wood utility poles along roadways support Distribution power lines and equipment that carry electricity to consumers.

While lower in voltage, Distribution lines and equipment still present serious hazards. Capacitors, switches and transformers store, regulate and convert medium-voltage to the lower voltage power customers use.

**FIRE.** Lightning, vehicle accidents, equipment failures and nearby fires can cause poles and equipment to catch fire.

**DOWNED LINES & EQUIPMENT.** Vehicles accidents and weather can cause power lines and equipment to fall. If a line is down, barricade to avoid contact and stay away.

**FALLEN / BROKEN POLES.** Vehicle accidents and weather can significantly damage or break poles.

**DAMAGED TRANSFORMERS.** Weather, vehicle accidents, pests, and nearby fires can cause pad-mounted transformers to spark, catch fire and leak.



*Pictured: Capacitor Bank*



*Pictured: Transformer Bank*



*Pictured: Pad Mounted Switchgear (left); Switches (right)*



## EMERGENCY RESPONSE:

- Secure the scene by safely blocking or stopping traffic. Keep the public a safe distance away from downed lines and equipment.
- If Oncor has not arrived at the scene, use reporting procedure to **CALL ONCOR.**
- Do not touch a vehicle that is in contact with power lines or equipment, and do not attempt to render aid to anyone inside – vehicle could be energized.
- Do not apply water to electric equipment – **LET IT BURN!**
- Water can be applied, downwind, to surrounding structures, if necessary.
- If oil or other fluids are present, stay away from the contaminated area.

# EMERGENCY RESPONSE

The following guidelines are for the safety of emergency personnel responding to incidents involving Oncor facilities and equipment

## USE REPORTING PROCEDURE TO CALL ONCOR

**UPON ARRIVAL:** Observe your surroundings. Take note of anything in contact with a power line, equipment or substation fence. Notice surrounding structures and other potential secondary hazards.

**DON'T TOUCH:** Remind all emergency personnel not to touch any power lines or equipment. This includes substation gates and fences. Do not attempt entry into a locked substation. Do not touch any vehicles or persons that are in contact with a power line or equipment. They may be energized. Wait for Oncor to verify that lines and equipment are de-energized before approaching.

**SECURE THE SCENE:** Eliminate the potential for secondary incidents. Keep the public at a safe distance. If fire or other hazards are exposing neighboring resident or commercial structures, evacuate as necessary. Set up lines or downwind large-caliber streams for exposure protection of surrounding structures. If there is oil or other fluids present, stay out of the area.

**LET EQUIPMENT BURN:** Burning electric equipment is already ruined and will be replaced. Never apply water to electric equipment. Focus on protecting surrounding structures and the safety of those in the area.

**WAIT FOR ONCOR TO ARRIVE:** If Oncor has not arrived at the scene, use reporting procedure to **CALL ONCOR**. A qualified Oncor representative must escort all persons inside a substation, manhole and vault containing electric equipment. Do not use metal tools around electric equipment and lines and leave ladders bedded. Wait for the Oncor representative to advise you that it is safe.



Oncor thanks you for your hard work and partnership in safety. If you have any questions or concerns related to Oncor, Oncor equipment, or this guide, please contact us at **1.888.875.6279**.

For additional copies of the Oncor First Responder Safety guide, go to [www.Oncor.com](http://www.Oncor.com) > Education & Safety > Safety Smart